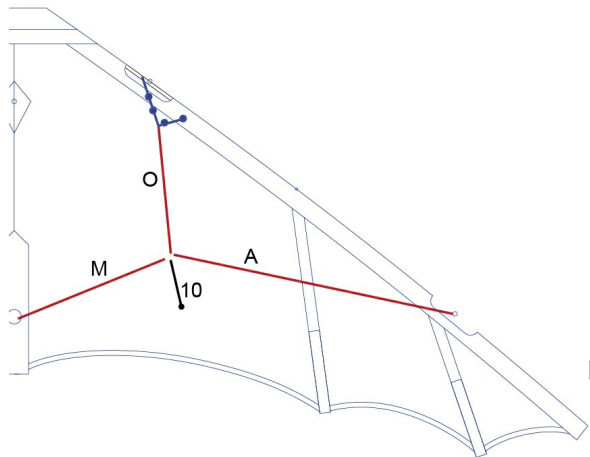


BRIDLE

X-CELERATOR

117010



O = 45 cm ; M = 46 cm ; A = 42 cm

MATERIAL
100kp corded Dyneema

Speed & Power

INFOS

KATEGORIE

Beginner
 Advanced
 Master
 Allround
 Trick
 Traction
 Precision
 Freestyle
 Team

WINDBEREICH — **OPT. WIND**

12 - 49 KM/H	30 KM/H
7 - 30 MPH	19 MPH
3 - 6 BFT.	5 BFT.
6 - 26 KNOT.	16 KNOT.

SCHNUR

70 - 120 kp	25 - 35 m
150 - 260 lbs	80 - 115 ft

ABMESSUNGE

cm	inch
158	62,2
68	26,8

SPEED

POWER

HINTS & TIPPS

SAIL
Ripstop Nylon

INCLUDED
 HQ Sportkites Quiver
 Flyingline: Dyneema 100kp 2x 30m on winder
 Flying Straps
 Instruction

PRODUCT INTRODUCTION — **PRODUCT CLEARING**
 Januar 2009

FRAME

ITEM NUM.	MOUNTING POSITION	ITEM NAME	#	LENGTH
	Upper Spreader	ø6 mm Carbon Spar	1	340
	Lower Spreader	ø6 mm Carbon Spar	2	570
	Spine	ø6 mm Carbon Spar	1	540
	Leadingedge	ø6 mm Carbon Spar	2	1000
	Inner Standoff	ø2 mm Solid Fiberglas Rod	2	245
	Outer Standoff	ø2 mm Solid Fiberglas Rod	2	225
	Plug lower Spreader	ø4 mm Solid Fiberglas Rod	2	150

PARTS

ITEM NUM.	MOUNTING POSITION	ITEM NAME	#
144550	Leadingedge/Spine	HQ Endcap, moulded, ø5,5 mm	3
144200	Standoff	HQ Endcap, moulded, ø2 mm	8
153660	Leadingedge/Spine	HQ Split Nock ø6 mm	3
153414	Lower Spreader	HQ Stand Off Connector small (2,5 - 4 mm)	4
160060	Spine	Center-T Exel ø6 mm	1
153426	Leadingedge	HQ LE-Connector ø6 mm angled	4
153495	Leadingedge/Spine	C-Clip 6 mm	7
153416	Lower Spreader	HQ Stand Off Connector big (5,5-6,3mm)	4